



Ministério  
das Finanças



# THE PROFILE OF DEMOGRAPHIC DIVIDEND - CAPE VERDE

## Evidence & Implications for Public Policies

### 3<sup>rd</sup> Edition of NTA – AFRICA CONFERENCE

#### Demographic Dividend, Generational Economics and Sustainable Development in Africa

Taking Stock and Building Forward Better 5 years after the adoption of the African Union Roadmap on  
Demographic Dividend

06-08 Sept. 2023 | Somone, Senegal

Adilson J. M. da Silva, INECV

José F. Delgado, DNP



Ministério  
das Finanças

DIREÇÃO NACIONAL  
DO PLANEAMENTO



# TOPICS

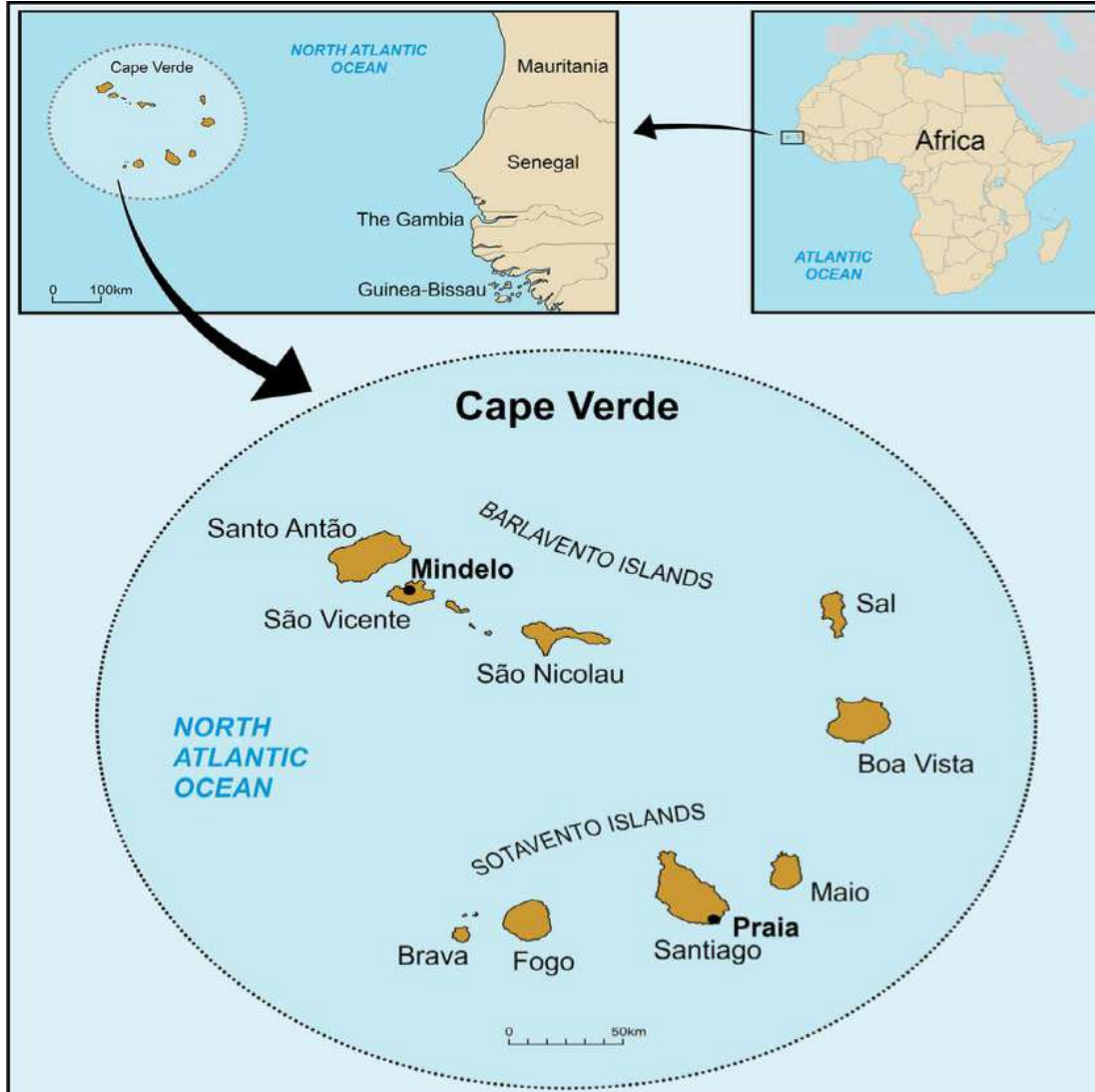
- 1. Context/Materials**
- 2. Analysis of life-Cycle**
- 3. 1st DD: (The opening of) the window of opportunity**



# CONTEXT/MATERIALS



# CAPE VERDE



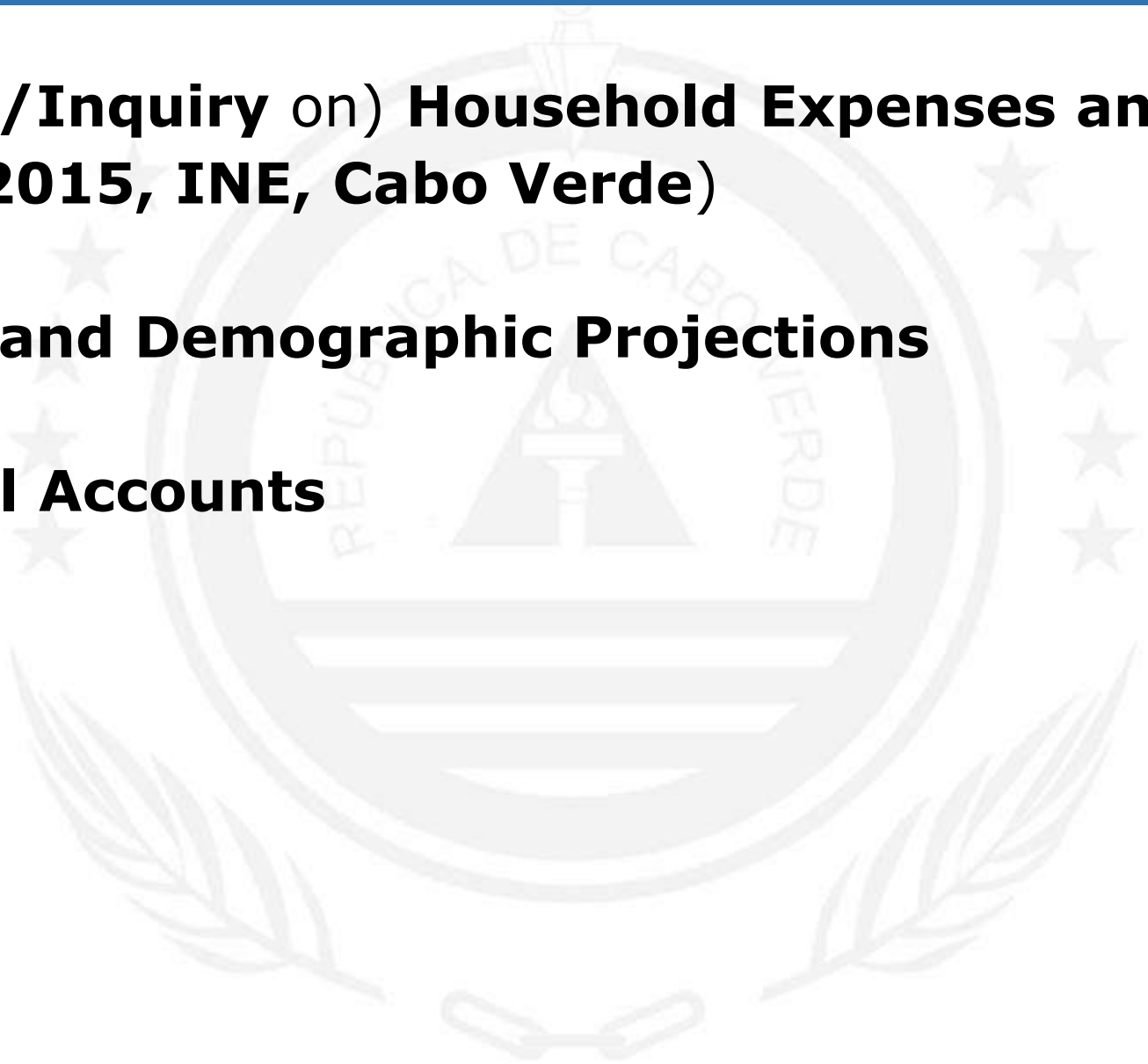
- A little **WEST AFRICA** country located 570 km off the western coast of Senegal
- A cluster of **10** (littles) **islands** with a total of **491 233 inhabitants** (census 2021)

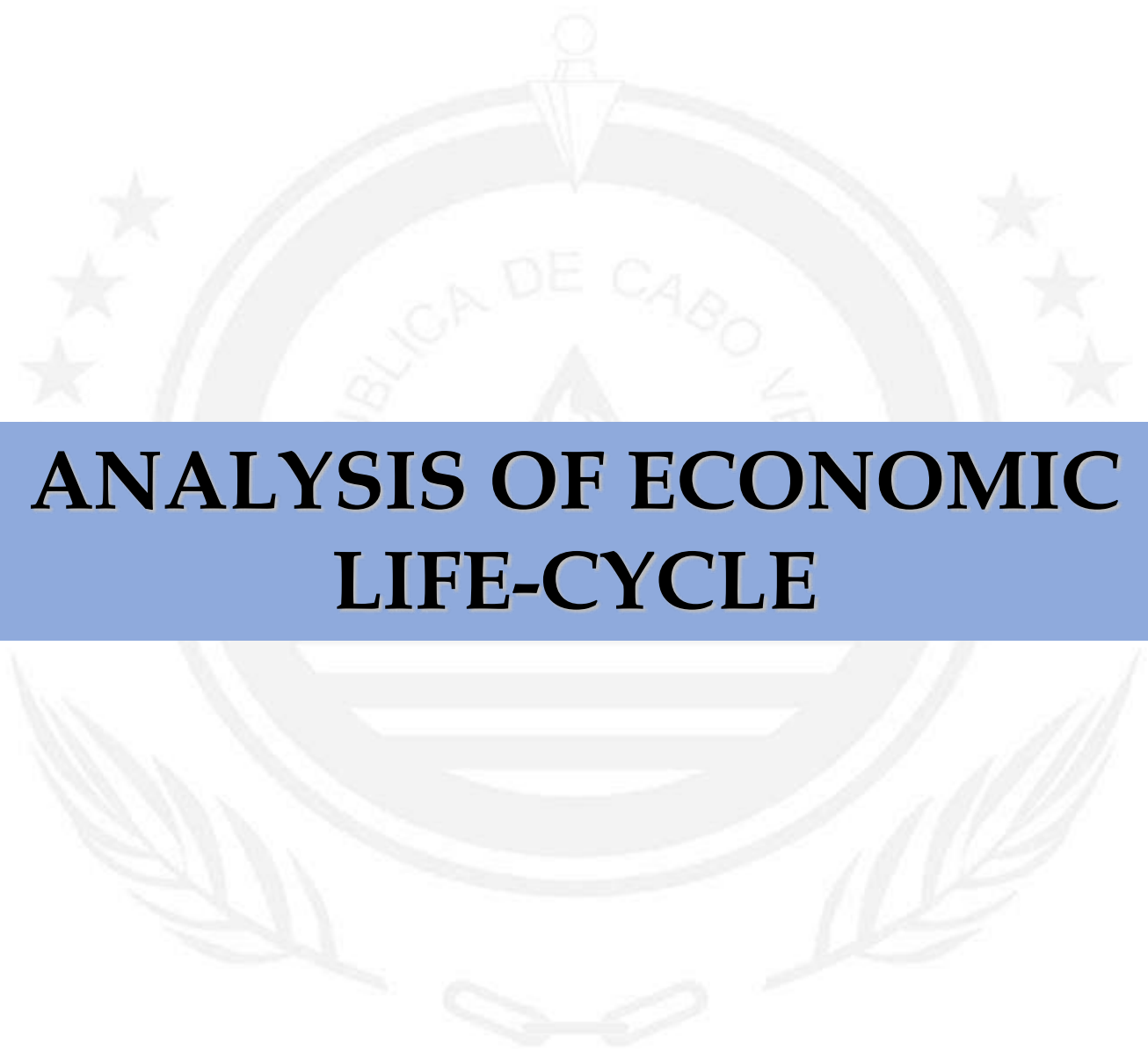
Island	Population	Area (km <sup>2</sup> )
St. Antão	36 950	785
S. Vicente	75 845	227
S. Nicolau	12 306	343
Sal	33 615	216
Boavista	12 798	620
Maio	6 330	269
<b>Santiago</b>	<b>274 048</b>	<b>991</b>
Fogo	33 754	476
Brava	5 647	67
<b>TOTAL</b>	<b>491 233</b>	<b>3 994</b>

# POPULATION EVOLUTION

	Year								
	1900	1940	1950	1960	1970	1980	1990	2000	2010
Popul.	143 929	181 740	149 984	199 902	270 999	295 703	341 491	434 625	491 875

# MATERIALS

- ❑ **(Survey/Inquiry on) Household Expenses and Income (IDRF/2015, INE, Cabo Verde)**
  - ❑ **Census and Demographic Projections**
  - ❑ **National Accounts**
  - ❑ **Etc.**
- 

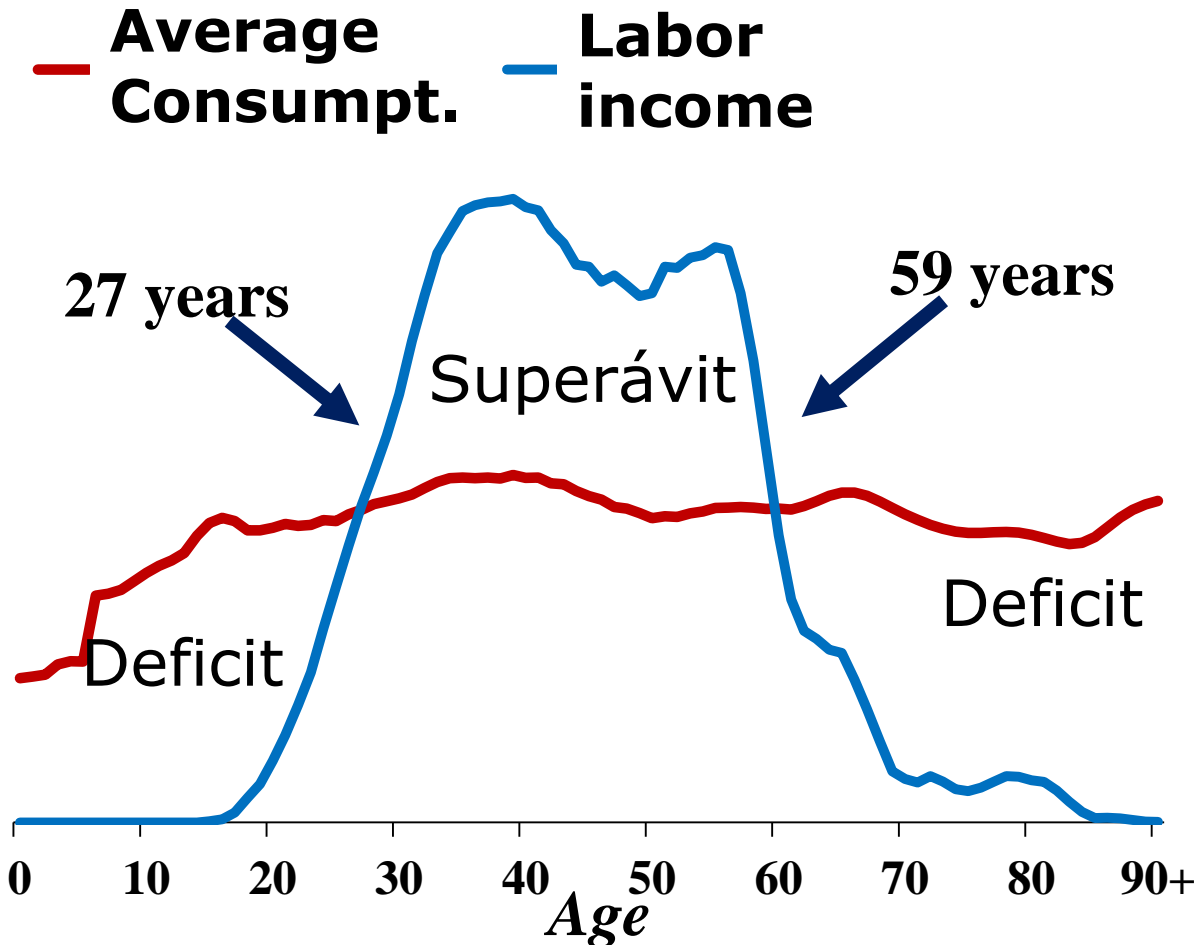


# **ANALYSIS OF ECONOMIC LIFE-CYCLE**

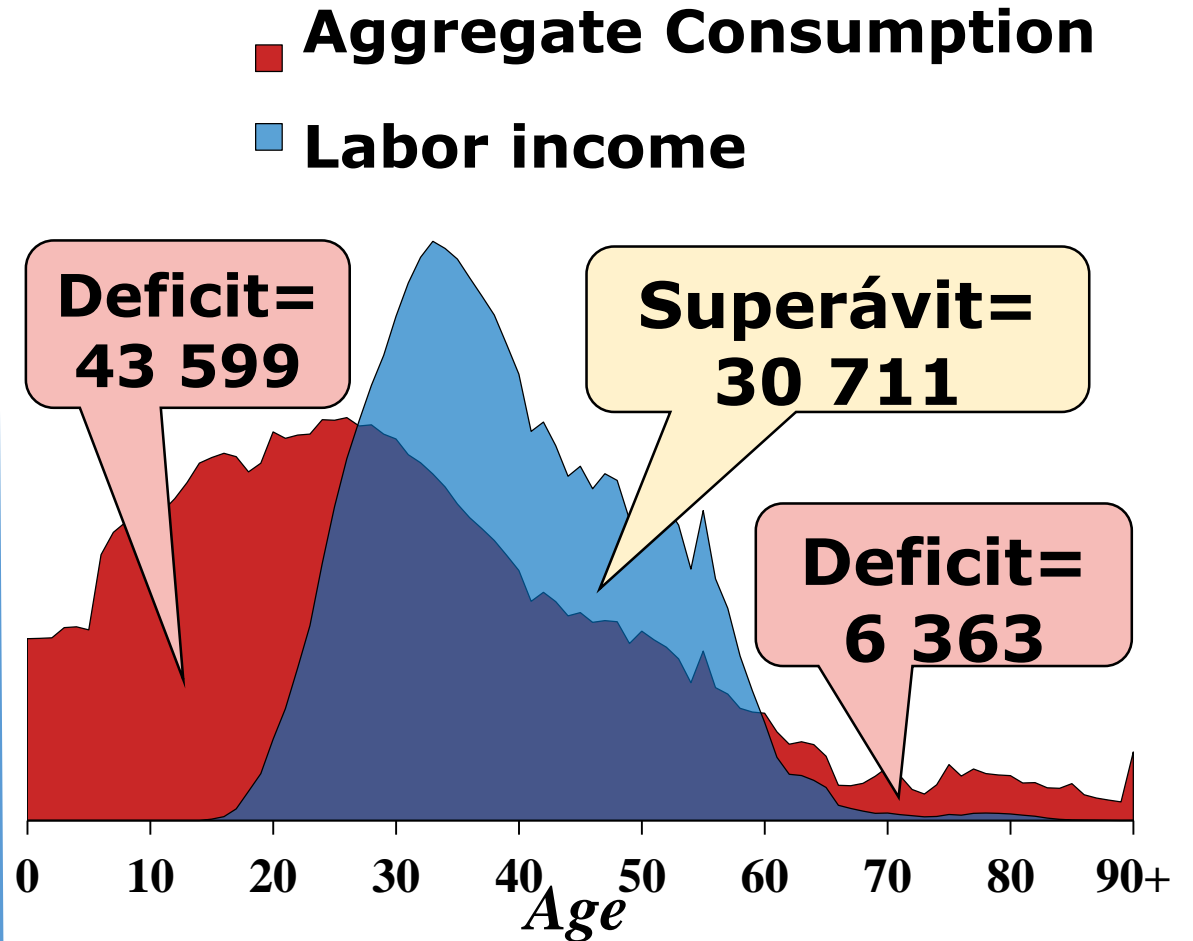


# ECONOMIC LIFE-CYCLE: LABOR INCOME vs CONSUMPTION

**Graphic 1:** Production vs average consumption (micro econ.) over the life-cycle, Cape Verde, 2015



**Graphic 2:** Production vs aggregate consumption (macro econ.) over the life-cycle, Cape Verde, 2015



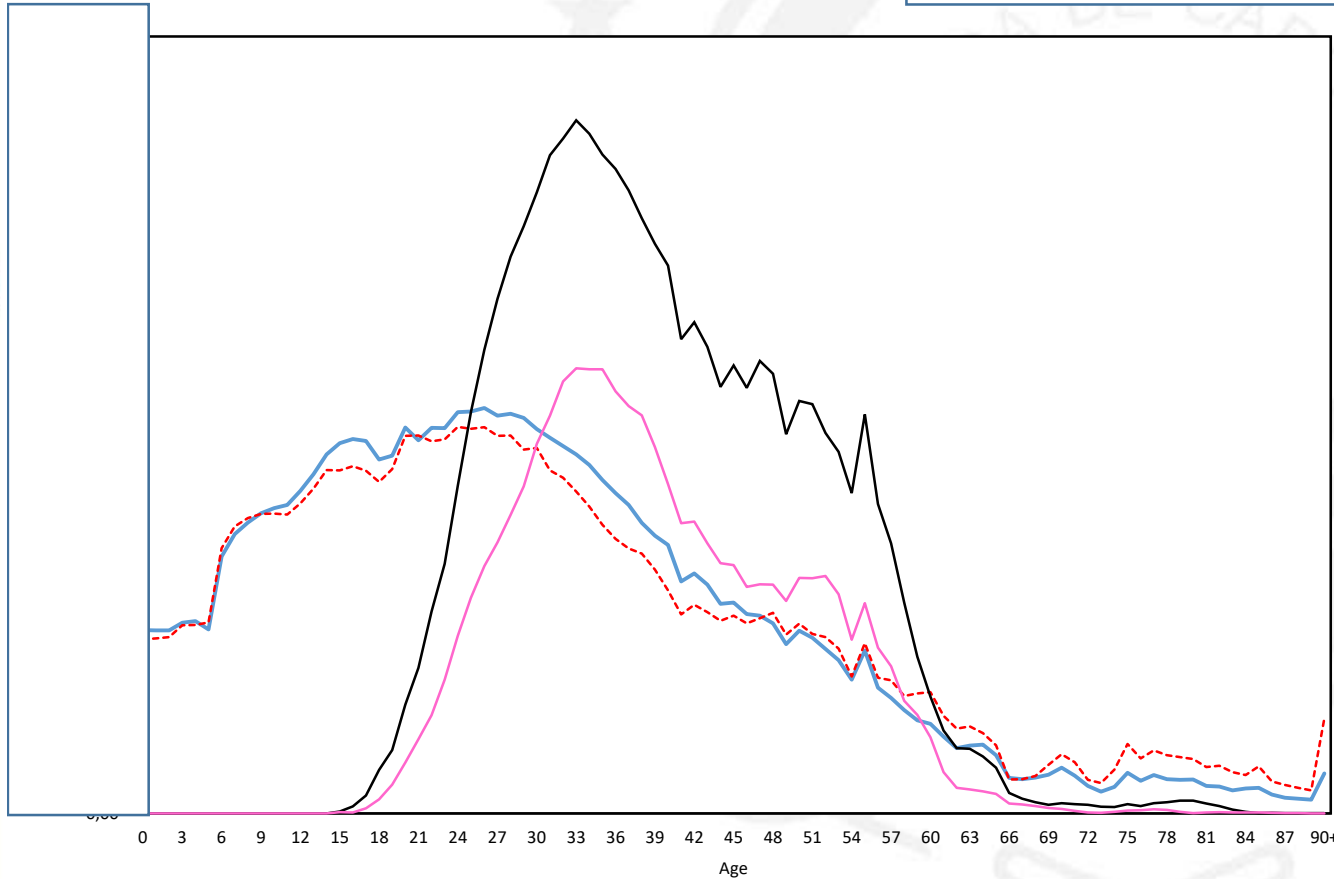


# SUMMARY: AGGREGATE CONSUMPT vs LABOR INCOME (billions CVE) in 2015

<b>GDP</b>	158 699 (1,557 bil. USD)	% of GDP
<b>LCD (Global)</b>	<b>19 251</b> (188 bil. USD)	<b>12,1%</b>
<b>LCD "0-26 years" (YOUTH)</b>	43 599 (427 bil. USD)	27,5%
<b>LCD "&gt;= 60" (old age)</b>	6 364 (62 bil. USD)	4,0%
<b>Superávit (27-59 years)</b>	-30 711 (302 bil. USD)	19,4%

# ECONOMIC LIFE-CYCLE (BY SEX)

**Graphic 3:** Production vs aggregate consumption over the life-cycle, Cape Verde, 2015



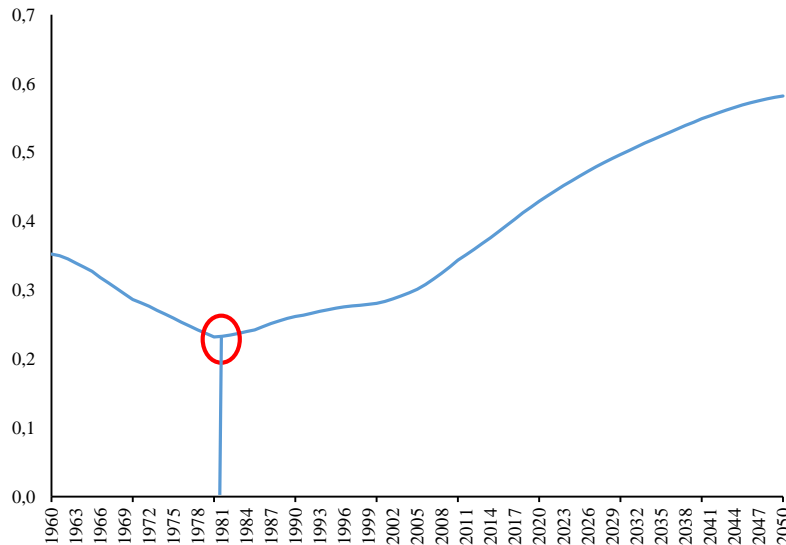
	Men	Women
<b>superávit</b> (Period in years)	26 to 61	30 to 57
<b>LCD</b>	- 2 493 (-24 bil. USD) <b>(Superávit)</b>	21 744 (210 bil. USD) <b>(Deficit)</b>
% GDP	1.6	13.7

**1st DD:  
OPENING (of) THE  
WINDOW OF  
OPPORTUNITY**

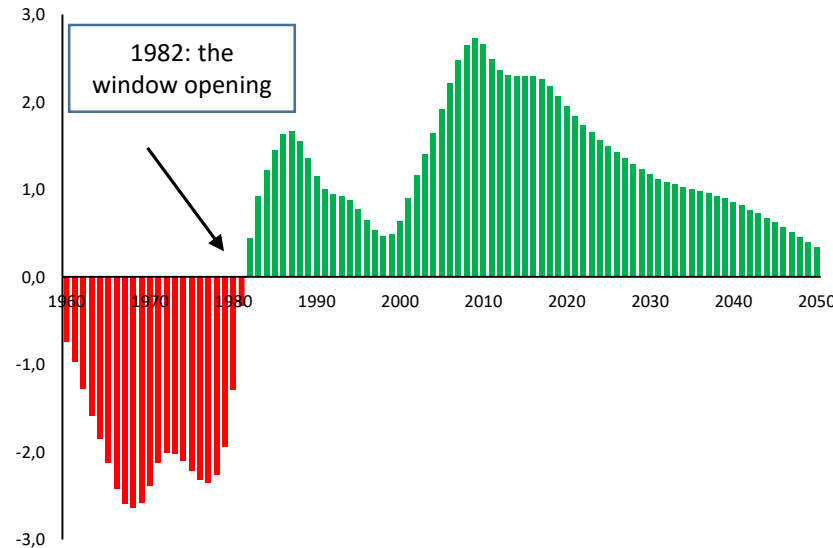


# THE STATE OF DD

**Graphic 4:** Evolution of ESR, Cape Verde, 1960-2060



**Graphic 5:** Change (%) of the ESR growth rate, Cape Verde, 1960-2050



The **coordination of public policies must be intensified and improved** in order to benefit from the age structure of the population... creating employment at a faster rate than consumers.

- The year 1982 represents the opening of the window for the 1st DD
- The DD decreases from 2010, and (is expected to) ends in 2070
- In 2017, the DD represents 2.26% of GDP per capita growth.



Ministério  
das Finanças

DIREÇÃO NACIONAL  
DO PLANEAMENTO

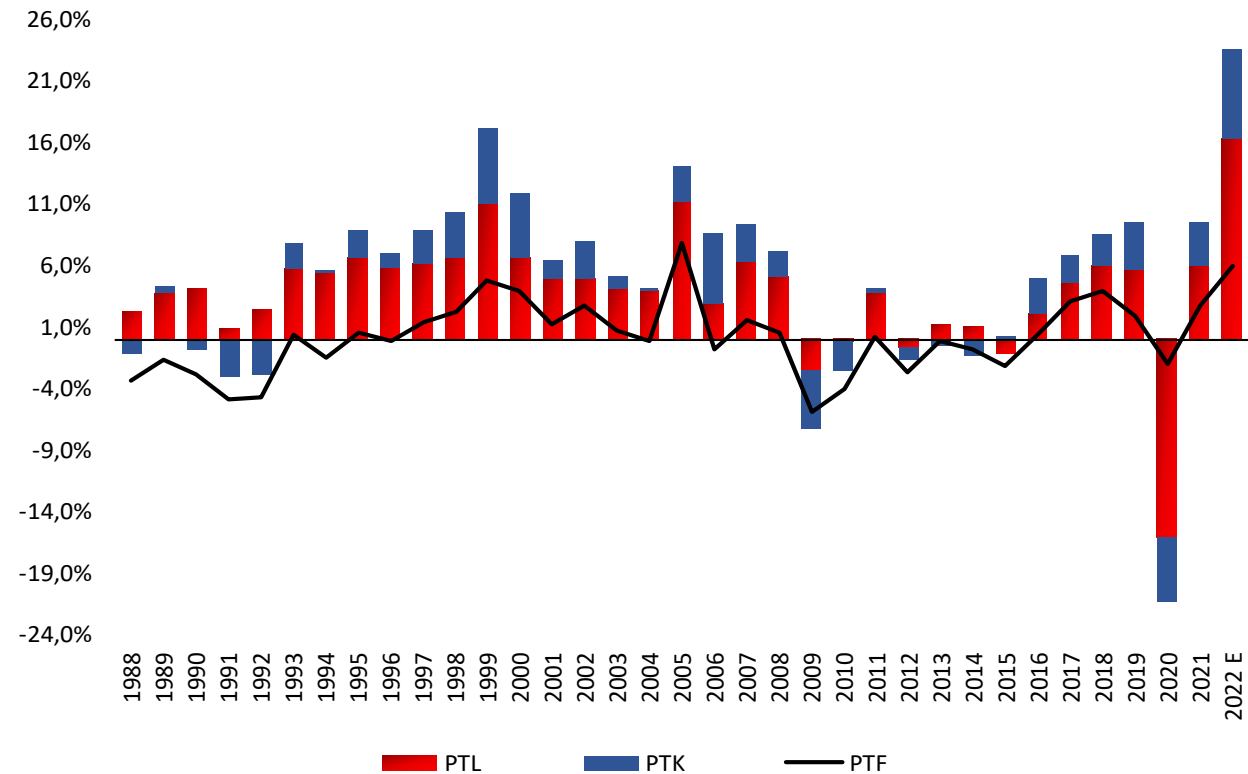


# POLICY IMPLICATIONS & CHALLENGES

The ESR highlights the need to **implement synchronized economic and social policies** in favor of: **(a) productivity growth**; **(b) the quality of human capital**; **(c) the health system**; **(d) the gender equality**; and **(e) the sustainability of social protection regimes**.

## Contribution of Total Factor Productivity to the growth

2016	2017	2022
0.3%	3.1%	5.9%



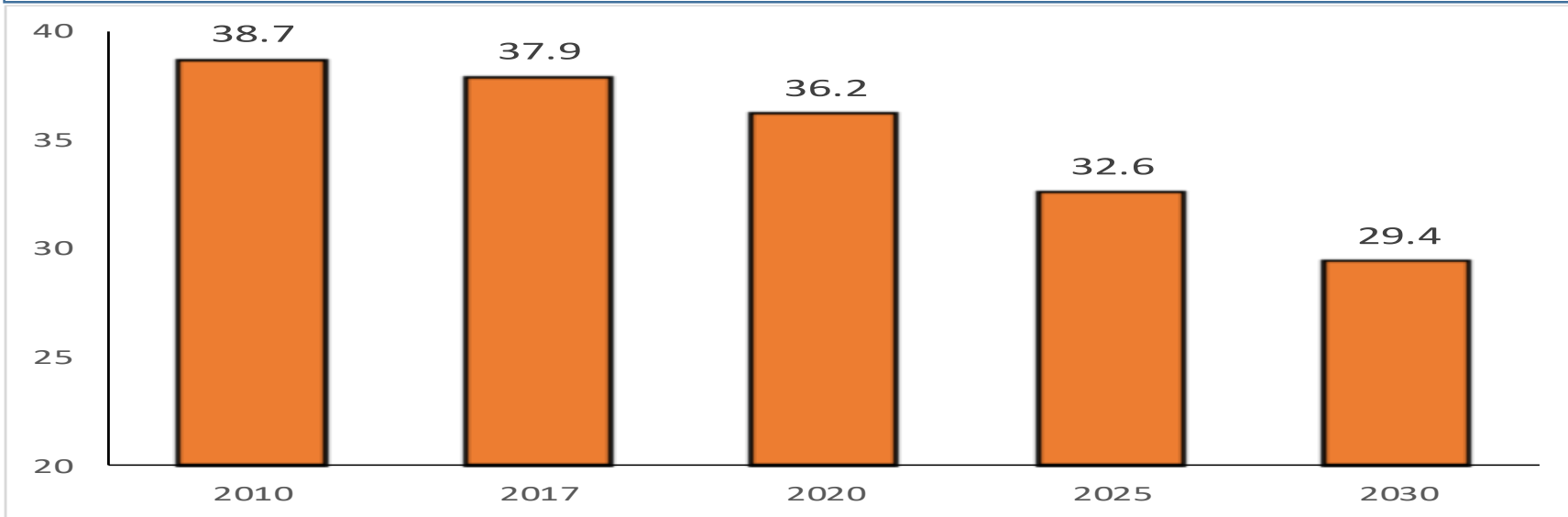
Ministério das Finanças

DIREÇÃO NACIONAL DO PLANEAMENTO



# POLICY IMPLICATIONS & CHALLENGES

**Graphic 7:** Proportion of young people in the population (Demographic Projection 2010-2030)



📢 **The weight of young people in the population is decreasing!**

📢 We can NO LONGER continue to exclude them from the labor market

📢 A national youth employment plan is needed



Ministério  
das Finanças

DIREÇÃO NACIONAL  
DO PLANEAMENTO





# RECOMMENDATIONS



- Strengthen:
  - Education, training and employment policies
  - Health policies for young people and adolescents
- Promote youth employment, with special focus on women
- Adopt care policies to anticipate problems related to population aging, such as the treatment of degenerative diseases, among others
- Promote the extension of social protection coverage, especially for groups with poor coverage, in order to improve old age protection.





**Thank you for your  
Attention**